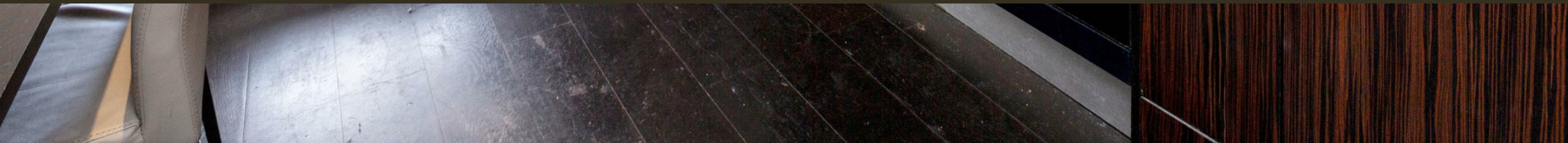




Moore House, 2 Gatliff Road  
London SW1W

GARTONJONES.COM





# Moore House, 2 Gatliff Road London, SW1W

## £425 Per Week

GARTON JONES.COM

8 Gatliff Road  
Grosvenor  
Waterside  
Chelsea  
London  
SW1W 8DP

Lettings:  
+44 (0) 20 7730 5007  
gws@gartonjones.com  
www.gartonjones.com

A STUDIO apartment of to RENT of approx. 271 sq.ft (25.22 sq.m) in Moore House, part of the popular Grosvenor Waterside development in Chelsea that surrounds the historic Grosvenor Dock. This STUDIO apartment is FURNISHED and offers an open plan studio/reception room, a fitted kitchen, a luxury bathroom suite and wood flooring with UNDERFLOOR HEATING.

There is a 24 HOUR CONCIERGE, GYM and SPA. On-site Sainsbury's Local, coffee shop and private kids club. SLOANE SQUARE & VICTORIA train station with Gatwick Express are within walking distance. Battersea Park is also just a short stroll away across Chelsea Bridge.

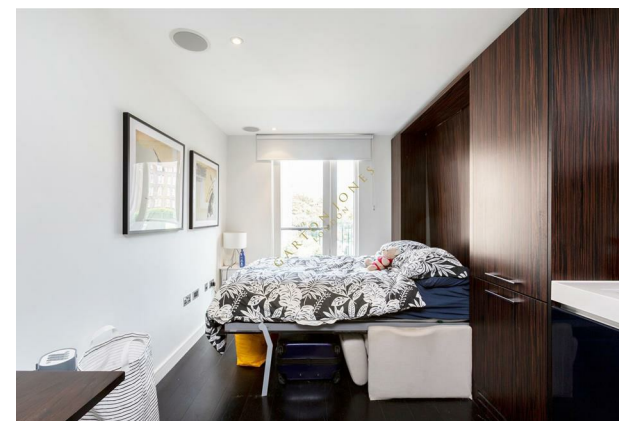
Available via Garton Jones' on-site office at Grosvenor Waterside (underneath Bramah House).

\*Please note furniture may differ to that shown in the current photos.

Westminster City Council (band D). Total: £912.05 per annum 2023/2024.

12 month minimum term. 5 week deposit required.

- 271 Sq.ft (25.22 Sq.m)
- Studio Apartment
- Open Plan Living
- Modern Bathroom
- Integrated Kitchen Appliances
- 24 Hour Concierge
- Secure Underground Parking Space (By Separate Negotiation)
- Residents Gym With Spa Facilities
- On-Site Sainsbury's, Coffee Shop & Bakery, Purple Dragon Private Kids Club & Crèche
- Walking Distance To Sloane Square & Victoria Station



Approximate Gross Internal Area  
271 sq ft / 25.22 sq m  
Type: 30.1

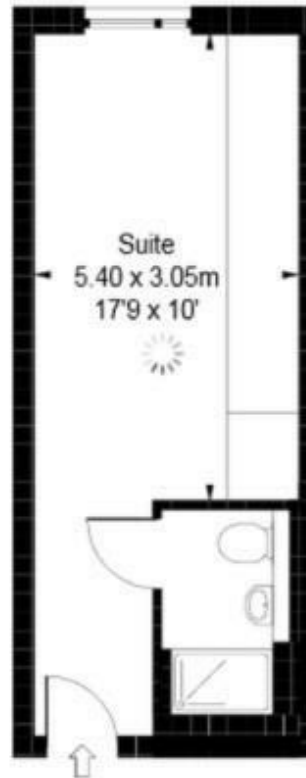


ILLUSTRATION FOR IDENTIFICATION PURPOSES ONLY



